

## 2-way cassette type

MMU-UP\*\*\*1WH-E

### Slim and compact unit

- Slim, compact and lightweight, the 2-way cassette has been designed to fit easily and discretely into any room interior.

### Comfort

- Unique air flow control, provides a balanced flow of air in two opposite directions, maximising air flow distribution. This feature when combined with the units fresh air intake ability helps to provide a perfect solution all year round.
- Enhanced indoor air quality with standard long-life filters with a wide bended surface to effectively collect dust particles.

### Design

- The elegant white decoration panel allows the unit to be installed seamlessly into any room.

### Easy to install

- Minimal weight (19kg) for units up to 4.5kw.
- Compact dimensions (height 295mm).
- Built-in drain pump.

Remote controller



RBC-AXU31UW-E  
RBC-AXU31-E



RBC-ASC11-E  
RBC-ASC11U-E



RBC-AMS55E-EN/ES  
RBC-AMSU51-EN/ES

## Technical specifications

Performances												
Indoor unit	MMU-	UP0071WH-E	UP0091WH-E	UP0121WH-E	UP0151WH-E	UP0181WH-E	UP0241WH-E	UP0271WH-E	UP0301WH-E	UP0361WH-E	UP0481WH-E	UP0561WH-E
Cooling capacity	kW	2.2	2.8	3.6	4.5	5.6	7.1	8.0	9.0	11.2	14.0	16.0
Heating capacity	kW	2.5	3.2	4.0	5.0	6.3	8.0	9.0	10.0	12.5	16.0	18.0
Power consumption	kW	0.029	0.029	0.029	0.030	0.044	0.054	0.054	0.064	0.073	0.088	0.117
Running current	A	0.23	0.23	0.23	0.24	0.32	0.39	0.39	0.46	0.48	0.57	0.75
Starting current	A	0.35	0.35	0.35	0.36	0.48	0.59	0.59	0.69	0.72	0.86	1.13

Physical Data												
Indoor unit	MMU-	UP0071WH-E	UP0091WH-E	UP0121WH-E	UP0151WH-E	UP0181WH-E	UP0241WH-E	UP0271WH-E	UP0301WH-E	UP0361WH-E	UP0481WH-E	UP0561WH-E
Air Flow (h/m/l)	m <sup>3</sup> /h	558/498/450	558/498/450	558/498/450	600/534/450	900/750/618	1050/840/738	1050/840/738	1260/900/780	1740/1434/1182	1800/1482/1230	2040/1578/1320
Air Flow (h/m/l)	l/s	155/138/125	155/138/125	155/138/125	167/148/125	250/208/172	291/233/205	291/233/205	350/250/217	483/398/328	500/412/342	567/438/367
Sound pressure level (h/m/l)	dB(A)	34/32/30	34/32/30	34/32/30	35/33/30	35/33/30	38/35/33	38/35/33	40/37/34	42/39/36	43/40/37	46/42/39
Dimensions (HxWxD)	mm	295x815x570	295x815x570	295x815x570	295x815x570	345x1180x570	345x1180x570	345x1180x570	345x1180x570	345x1600x570	345x1600x570	345x1600x570
Weight	kg	19	19	19	19	26	26	26	26	36	36	36
Panel dimensions (HxWxD)	mm	20x1050x680	20x1050x680	20x1050x680	20x1050x680	20x1415x680	20x1415x680	20x1415x680	20x1415x680	20x1835x680	20x1835x680	20x1835x680
Panel weight	kg	10	10	10	10	14	14	14	14	14	14	14
Connecting pipe, gas	mm/inch	9.52(3/8")	9.52(3/8")	9.52(3/8")	12.7 (1/2")	12.7 (1/2")	15.9 (5/8")	15.9 (5/8")	15.9 (5/8")	15.9 (5/8")	15.9 (5/8")	15.9 (5/8")
Connecting pipe, liquid	mm/inch	6.35 (1/4")	6.35 (1/4")	6.35 (1/4")	6.35 (1/4")	6.35 (1/4")	9.52(3/8")	9.52(3/8")	9.52(3/8")	9.52(3/8")	9.52(3/8")	9.52(3/8")
Drain port diameter	mm	25	25	25	25	25	25	25	25	25	25	25
Power supply	1-phase 50Hz 230V (220-240V) / 1-phase 60Hz 220V (Separate power supply for indoor units required.)											

Note 1 : The capacities are measured under the conditions specified by JIS B 8615 based on the reference piping.

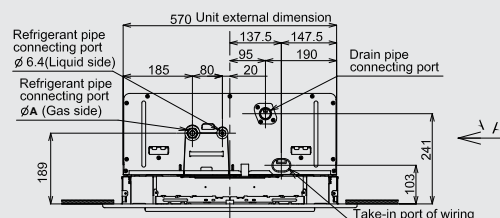
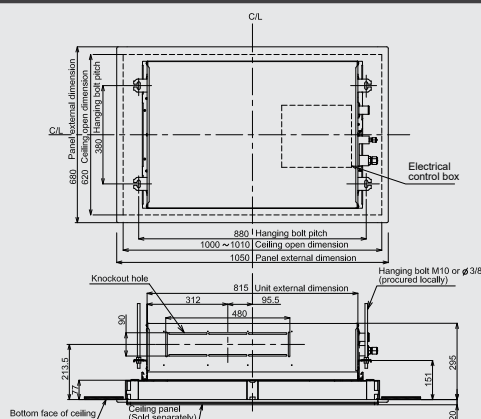
Note 2 : The sound level are measured in an anechoic chamber in accordance with JIS B 8616.

Normally, the values measured in the actual operating environment become larger than the indicated values due to the effects of external sound.

Note : Rated conditions Cooling : Indoor air temperature 27°C DB/19°C WB, Outdoor air temperature 35°C DB

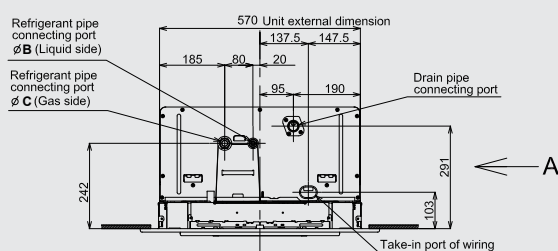
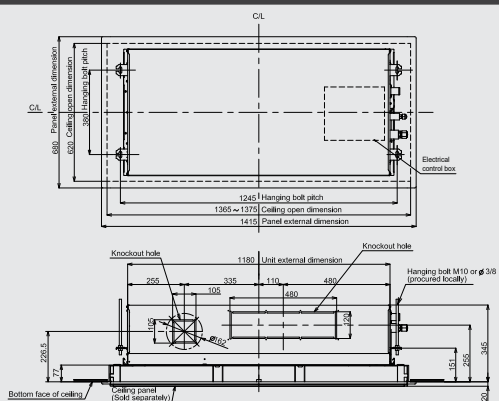
Heating : Indoor air temperature 20°C DB, Outdoor air temperature 7°C DB/6°C WB

## MMU-UP0071WH-E to MMU-UP0151WH-E



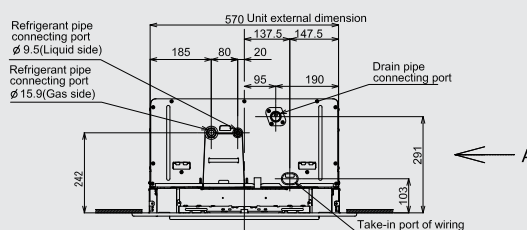
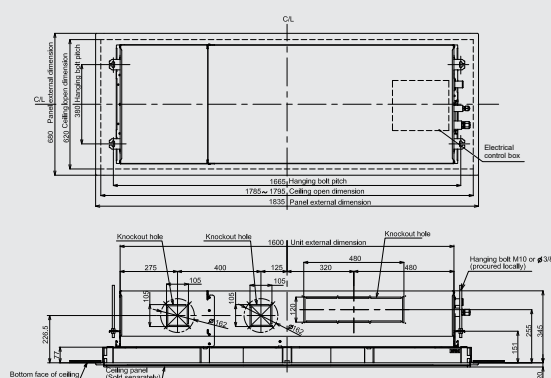
(Unit: mm)

## MMU-UP0181WH-E to MMU-UP0301WH-E



(Unit: mm)

## MMU-UP0361WH-E to MMU-UP0561WH-E



(Unit: mm)

## Accessories

No	Part name	Model name	Applied model	Notes	Remarks
1	Ceiling panel	RBC-UW283PG(W)-E	MMU-UP0071 to 0151WH	Required accessory	
		RBC-UW803PG(W)-E	MMU-UP0181 to 0301WH		
		RBC-UW1403PG(W)-E	MMU-UP0361 to 0561WH		
2	Super long life filter	TBC-LF283UW-E	MMU-UP0071 to 0151WH	Dust collecting effect: 50% (Weight method)	Use with TBC-FC283UW-E
		TBC-LF803UW-E	MMU-UP0181 to 0301WH		Use with TBC-FC803UW-E
		TBC-LF1403UW-E	MMU-UP0361 to 0561WH		Use with TBC-FC1403UW-E
3	Filter chamber	TBC-FC283UW-E	MMU-UP0071 to 0151WH	For super long life filter	
		TBC-FC803UW-E	MMU-UP0181 to 0301WH		
		TBC-FC1403UW-E	MMU-UP0361 to 0561WH		
4	Auxiliary fresh air flange	TBC-FF151US-E	MMU-UP0071 to 0561WH	For fresh air intake by using the knockout hole of indoor unit.	

