

1-way cassette type

MMU-UP***YHP-E
MMU-UP***SH-E

The perfect choice

- Toshiba's innovative slim-line 1-way cassette is simple to install and suitable for small areas, such as hotels, offices and reception rooms.

Design

- New white elegant panel design to match all types of interiors.

Flexibility

- 150mm chassis height adapted to low suspended ceilings conditions (YHP only).

Comfort

- Low noise level down to 25 dB(A) for quiet operation.
- 5-speed fan operation for perfect air flow (YHP only).
- Air purifier available as an option to keep a fresh and clean environment (YHP only).

Remote controller



RBC-AX33UY-P-E (YHP)
RBC-AXU31C-E (SH)



RBC-ASC11-E
RBC-ASC11U-E



RBC-AMS55E-EN/ES
RBC-AMSU51-EN/ES

Technical specifications

Performances							
Indoor unit	MMU-	UP0071YHP-E	UP0091YHP-E	UP0121YHP-E	UP0151SH-E	UP0181SH-E	UP0241SH-E
Cooling capacity	kW	2.2	2.8	3.6	4.5	5.6	7.1
Heating capacity	kW	2.5	3.2	4.0	5.0	6.3	8.0
Power consumption	kW	0.017	0.018	0.018	0.042	0.046	0.075
Running current	A	0.18	0.19	0.20	0.34	0.37	0.62
Starting current	A	0.60			0.51	0.54	0.80

Physical Data							
Indoor unit	MMU-	UP0071YHP-E	UP0091YHP-E	UP0121YHP-E	UP0151SH-E	UP0181SH-E	UP0241SH-E
Air Flow (h/m/l)	m³/h	500/390/270	520/410/290	540/420/290	750/690/630	780/720/660	1140/960/810
Air Flow (h/m/l)	l/s	150/133/117			208/192/175	217/200/183	317/267/225
Sound pressure level (h/m/l)	dB(A)	38/34/25	39/35/26	40/36/26	37/35/32	38/36/34	45/41/37
Dimensions (HxWxD)	mm	150x990x450			200x1000x710		
Weight	kg	14			21		22
Panel	mm	RBC-UY32P-E			RBC-US21PGE		
Panel dimensions (HxWxD)	mm	30x1220x530			20x1230x800		
Panel weight	kg	4			5.5		
Connecting pipe, gas	mm/inch	9.52(3/8")			12.7 (1/2")		15.9 (5/8")
Connecting pipe, liquid	mm/inch	6.35 (1/4")					9.52(3/8")
Drain port diameter	mm	25					
Power supply		1-phase 50Hz 230V (220–240V) / 1-phase 60Hz 220V (Separate power supply for indoor units required.)					

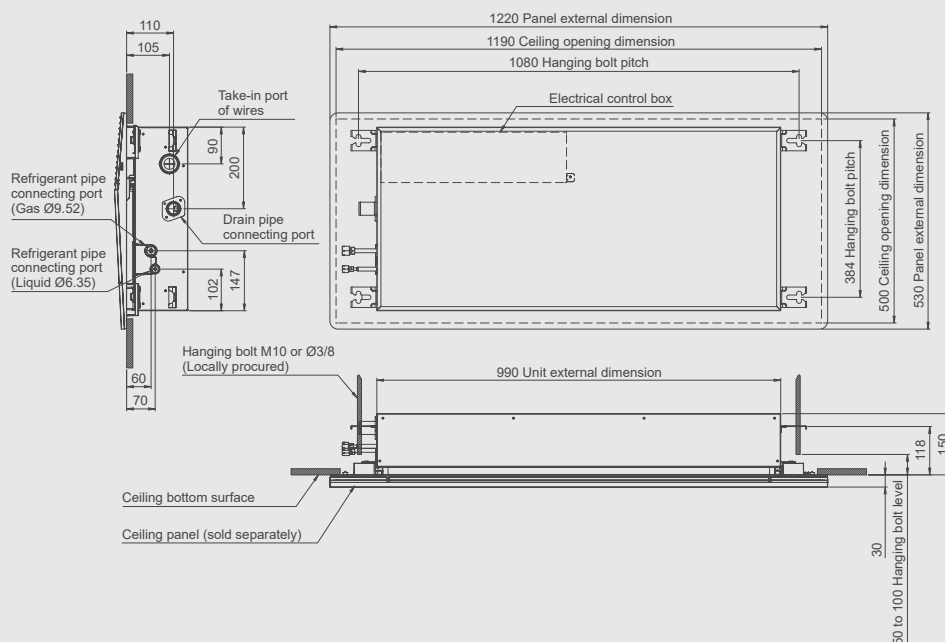
Note 1 : The capacities are measured under the conditions specified by JIS B 8615 based on the reference piping.

Note 2 : The sound level are measured in an anechoic chamber in accordance with JIS B 8616.

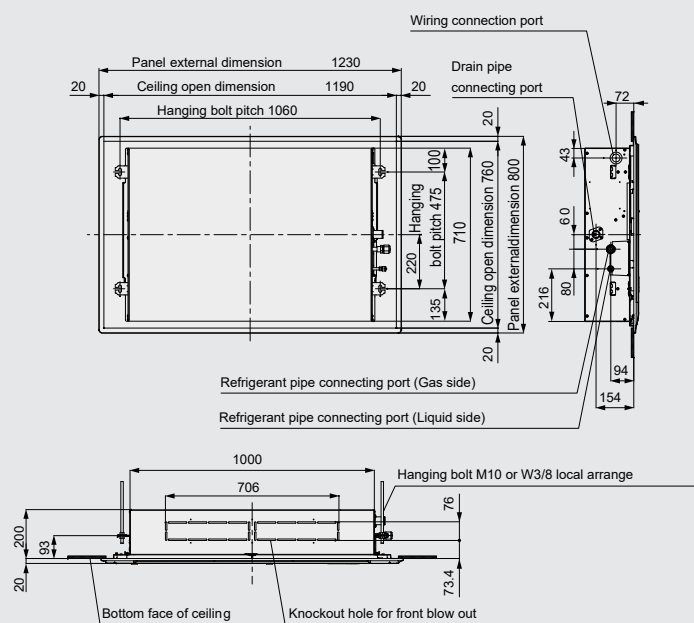
Normally, the values measured in the actual operating environment become larger than the indicated values due to the effects of external sound.

Note : Rated conditions Cooling : Indoor air temperature 27°C DB/19°C WB, Outdoor air temperature 35°C DB

Heating : Indoor air temperature 20°C DB, Outdoor air temperature 7°C DB/6°C WB

MMU-UP0071YHP-E to UP0121YHP-E

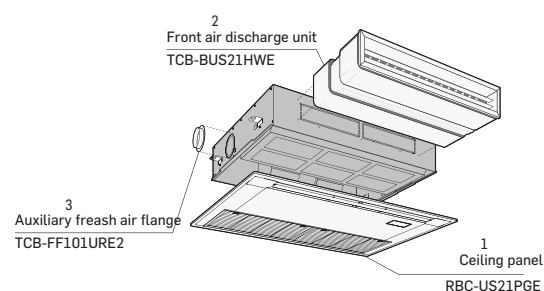
(Unit: mm)

MMU-UP0151SH-E to UP0241SH-E

(Unit: mm)

Accessories

No	Part name	Model name	Applied model	Note	Remarks
1	Panel	RBC-UJ32P-E	MMU-UP_1YHP-E	1-Way cassette panel without receiver	Required accessory
		RBC-US21PGE			Required accessory
2	Front air discharge unit	TCB-BUS21HWE	MMU-UP_1SH-E		
3	Auxiliary fresh air flange	TCB-FF101URE2			For easy fresh air intake by using the knockout hole of indoor unit. (dia.=100 mm)
-	Air purifier kit	TCB-EAPC1UYHP-E	MMU-UP-1YHP-E	Set of Plasma Air Purifier, Dust sensor, Air quality indicator and Wireless receiver	
-	Occupancy sensor	TCB-SIR41UYP-E	MMU-UP-1YHP-E	Occupancy sensor	Cannot match with Wireless receiver Kit
-	Wireless receiver kit	RBC-AX33UYP-E	MMU-UP-1YHP-E	Wireless RC kit	Cannot match with Occupancy sensor



MMU-UP0151SH-E/TR, UP0181SH-E/TR, UP0241SH-