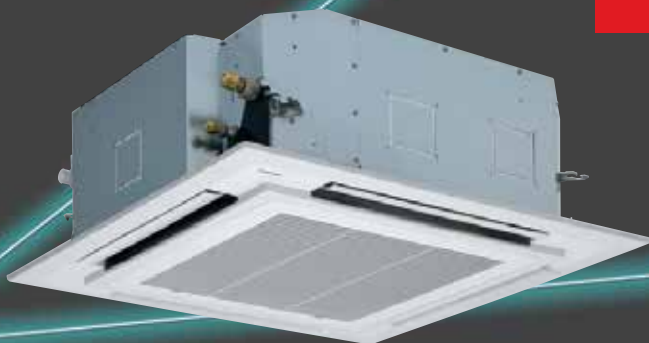


4-way cassette type

MMU-UP***1HP-E



Compact

- The 4-way cassette is designed to provide uniform air distribution and total user comfort making this unit the ideal solution for small commercial applications.

Reliability

- Self-cleaning function and Ag-ion tip for anti-mould in drain cap.
- Built-in high-lift drain pump.

Easy to install

- Compact chassis with only 256mm height (Up to size 30).
Lightweight unit, for easy and quick installation.

Comfort

- Two louver shape option: straight flow louver and wide flow louver for optimum air distribution.
- Possibility to set three different swing modes providing individual control to maximise end user comfort.
- Wide air flow in all directions.
- Optimal air diffusion up to 4.6m ceiling height!

Remote controller



RBC-AXU31UM-E



RBC-ASC11-E
RBC-ASC11U-E



RBC-AMS55E-EN/ES
RBC-AMSU51-EN/ES

Technical specifications

Performances											
Indoor unit	MMU-	UP0091HP-E	UP0121HP-E	UP0151HP-E	UP0181HP-E	UP0241HP-E	UP0271HP-E	UP0301HP-E	UP0361HP-E	UP0481HP-E	UP0561HP-E
Cooling capacity	kW	2.8	3.6	4.5	5.6	7.1	8.0	9.0	11.2	14.0	16.0
Heating capacity	kW	3.2	4.0	5.0	6.3	8.0	9.0	10.0	12.5	16.0	18.0
Power consumption	kW	0.021	0.021	0.023	0.026	0.036	0.036	0.043	0.088	0.112	0.112
Running current	A	0.23	0.23	0.27	0.29	0.38	0.38	0.43	0.78	0.88	0.88
Starting current	A	0.30	0.30	0.33	0.36	0.42	0.42	0.59	0.87	1.23	1.26

Physical Data											
Indoor unit	MMU-	UP0091HP-E	UP0121HP-E	UP0151HP-E	UP0181HP-E	UP0241HP-E	UP0271HP-E	UP0301HP-E	UP0361HP-E	UP0481HP-E	UP0561HP-E
Air Flow (h/m/l)	m ³ /h	800/730/680	800/730/680	930/830/790	1050/920/800	1290/920/800	1290/920/800	1320/1100/850	1970/1430/1070	2130/1430/1130	2130/1520/1230
Air Flow (h/m/l)	l/s	222/203/189	222/203/189	258/231/219	292/256/222	358/256/222	358/256/222	367/306/236	547/397/297	592/397/314	592/422/342
Sound pressure level (h/m/l)	dB(A)	30/29/27	30/29/27	31/29/27	32/29/27	35/31/28	35/31/28	38/33/30	43/38/32	46/38/33	46/40/33
Dimensions (HxWxD)	mm	256x840x840	256x840x840	256x840x840	256x840x840	256x840x840	256x840x840	256x840x840	319x840x840	319x840x840	319x840x840
Weight	kg	18	18	20	20	20	20	20	25	25	25
Panel dimensions (HxWxD)	mm	30x950x950	30x950x950	30x950x950	30x950x950	30x950x950	30x950x950	30x950x950	30x950x950	30x950x950	30x950x950
Panel weight	kg	4	4	4	4	4	4	4	4	4	4
Connecting pipe, gas	mm/inch	9.52(3/8")	9.52(3/8")	12.7 (1/2")	12.7 (1/2")	15.9 (5/8")	15.9 (5/8")	15.9 (5/8")	15.9 (5/8")	15.9 (5/8")	15.9 (5/8")
Connecting pipe, liquid	mm/inch	6.35 (1/4")	6.35 (1/4")	6.35 (1/4")	6.35 (1/4")	9.52(3/8")	9.52(3/8")	9.52(3/8")	9.52(3/8")	9.52(3/8")	9.52(3/8")
Drain port diameter	mm	25	25	25	25	25	25	25	25	25	25
Power supply		1-phase 50Hz 230V (220-240V) / 1-phase 60Hz 220V (Separate power supply for indoor units required.)									

Note 1 : The capacities are measured under the conditions specified by JIS B 8615 based on the reference piping.

Note 2 : The sound level are measured in an anechoic chamber in accordance with JIS B 8616.

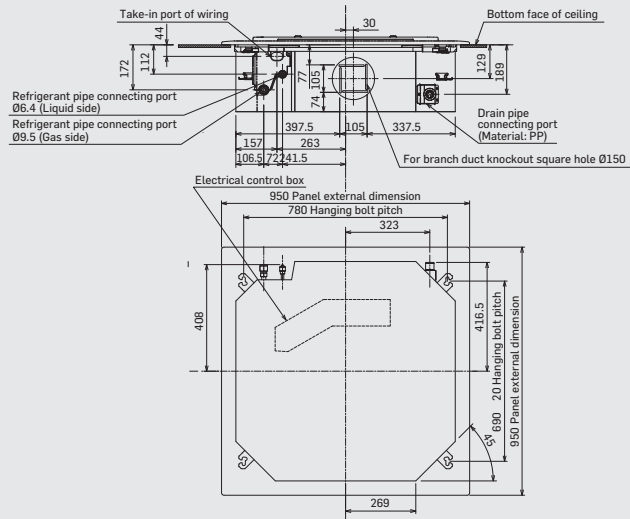
Normally, the values measured in the actual operating environment become larger than the indicated values due to the effects of external sound.

Note : Rated conditions Cooling : Indoor air temperature 27°C DB/19°C WB, Outdoor air temperature 35°C DB

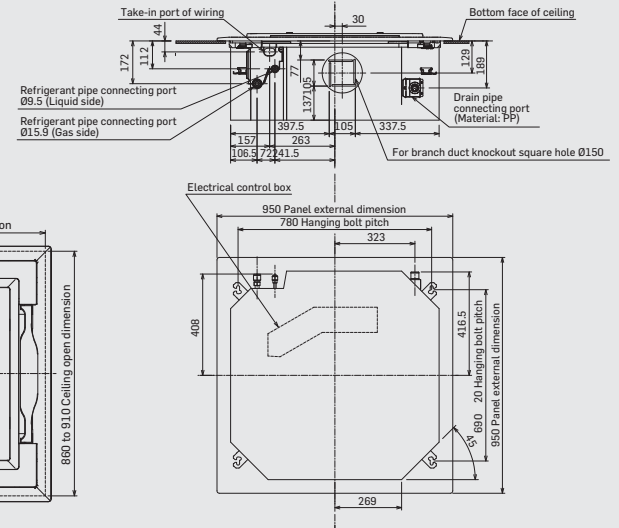
Heating : Indoor air temperature 20°C DB, Outdoor air temperature 7°C DB/6°C WB

MMU-UP0091HP-E to MMU-UP0561HP-E

MMU-UP0091HP-E to MMU-UP0301HP-E



MMU-UP0361HP-E to MMU-UP0561HP-E



(Unit: mm)

Accessories

No	Type	Model name	Qty/unit	Note
1	Ceiling Panel (Wide-flow louver)	RBC-U32PGP-E	1	White (Munsell: 2.5GY9.0/0.5)
2	Spacer for height adjustment	TCB-SP1602UE	1	50 mm
3	Fresh air chamber	TCB-GFC1602UE	1	Use with TCB-GB1602U
4	Fresh air intake box	TCB-GB1602UE	1	Connection=Dia.100 mm fresh air intake ratio: Up to 20%
5	Air discharge direction kit	TCB-BC1602UE	1	6-direction patterns
6	Auxiliary fresh air flange	TCB-FF101URE2	1	Connection=Dia.100 mm fresh air intake ratio: Up to 5%

